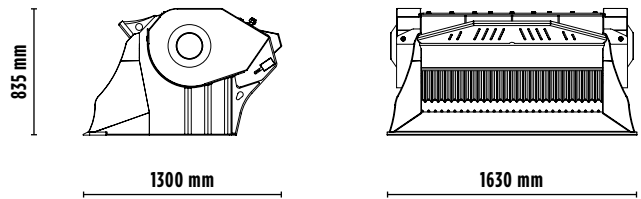
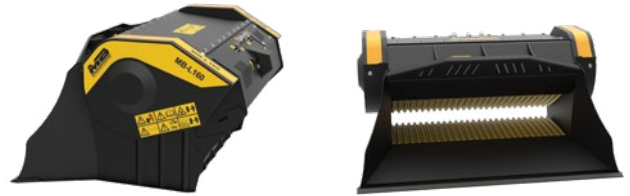
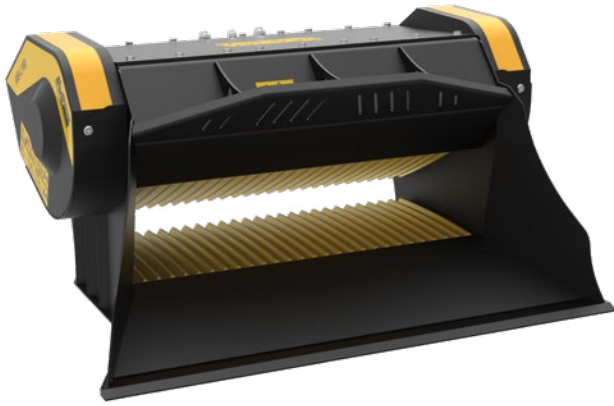


MB-L160 S2



ACCESSORIES

- RECOMMENDED SPARE PARTS KIT
- FIXED COUPLING
- HOUR METER
- DUST SUPPRESSION KIT
- 24 MONTHS WARRANTY



SPECIFICATIONS

EQUIPMENT	$\geq 4,5 \leq 16$ Ton
LOAD CAPACITY	0,35 m ³
OPENING DIMENSIONS	L 1100 H 250 mm
OUTPUT SETTING	$\geq 15 \leq 60$ mm
DIMENSIONS	1300 x 1630 H 835 mm
OIL FLOW	110 l/min.
PRESSURE	> 200 bar
COUNTER PRESSURE	< 10 bar
WEIGHT	1,45 Ton

AREAS OF APPLICATION



RECYCLING



LARGE-SCALE
RESIDENTIAL
SITES



SMALL/
MEDIUM-SCALE
COMMERCIAL SITES



DEMOLITION

The data provided above is not binding, as the manufacturer reserves itself the right to make improvements to its products at any time and with no advance notice. References to excavator weights are approximate and many may be subject to changes.

Rev. 2020 / 07



WWW.MBCRUSHER.COM